

Place this line at
Northside



Place this line at
Shaftoe Moor

Topographic Profile - Northside to Shaftoe Moor

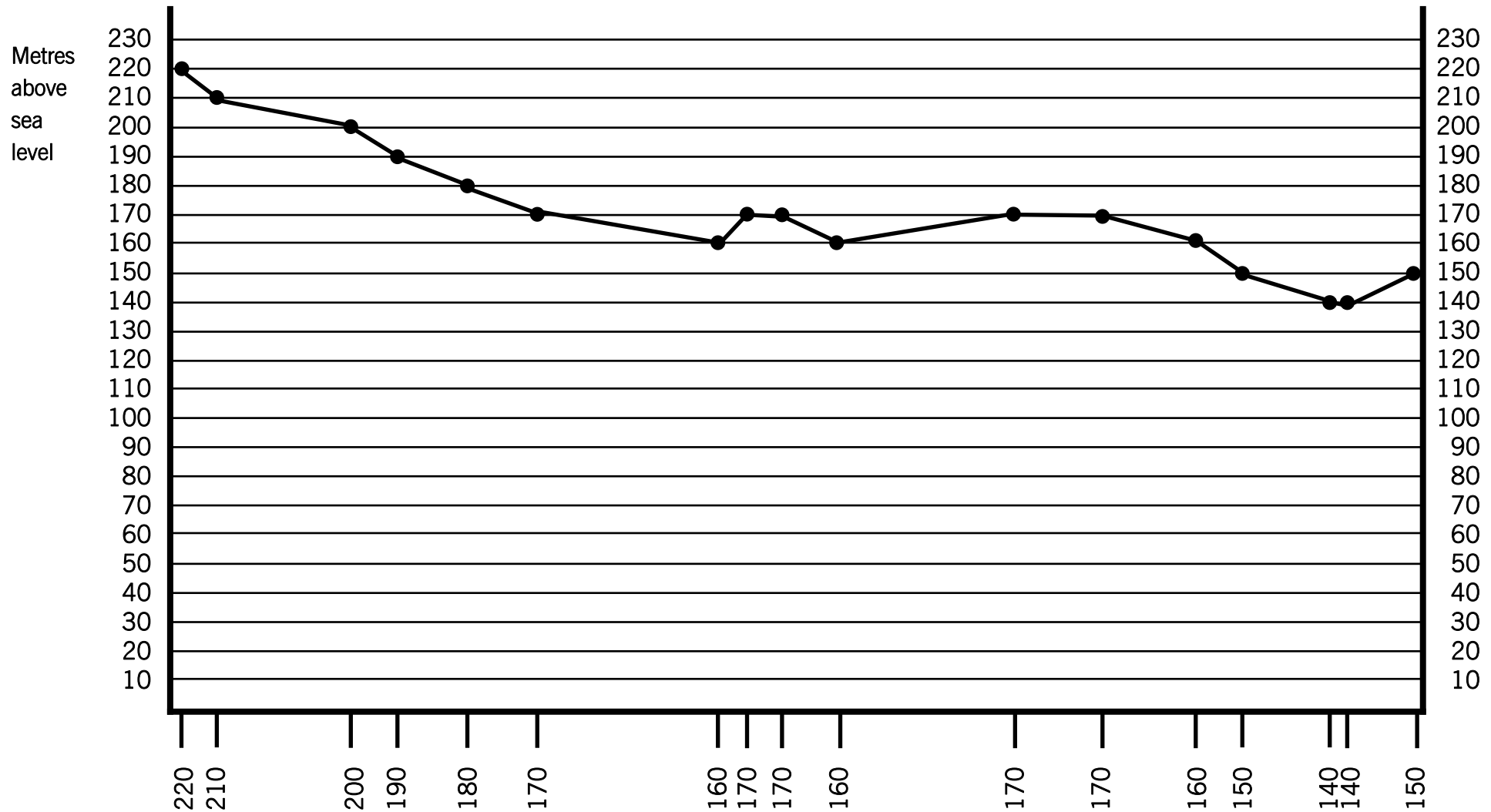
Note: To complete this exercise please print the PDF actual size and single-sided.

1. A topographic profile is a way to reveal the ups and downs in a landscape from a map from its contours. The contours mark the height of the land above sea level, you can see numbers (in metres) on them. A contour follows a level in the landscape that is at the same height above sea level.
2. Place the top edge of this sheet along the map from Northside to Shaftoe Moor - lined up with the lines/arrows above.
3. Between Northside and Shaftoe Moor mark where contours touch the edge of the paper. At the same time note the height of the contour above sea level - you may have to follow it along a bit to find the number.
4. Then align this sheet so that your edge lines up with the bottom of the chart on the other page.
5. Now mark the height of each contour you have noted against the chart - see the scale on the left or right - use a dot or cross.
6. Join up the marks and you can see the lumps, bumps and dips in the landscape!
7. Are any of the dips river valleys?



Creating a Topographic Profile for Kirkharle

Note: The vertical scale is exaggerated as it does not match the horizontal distance scale



Creating a Topographic Profile for Kirkharle